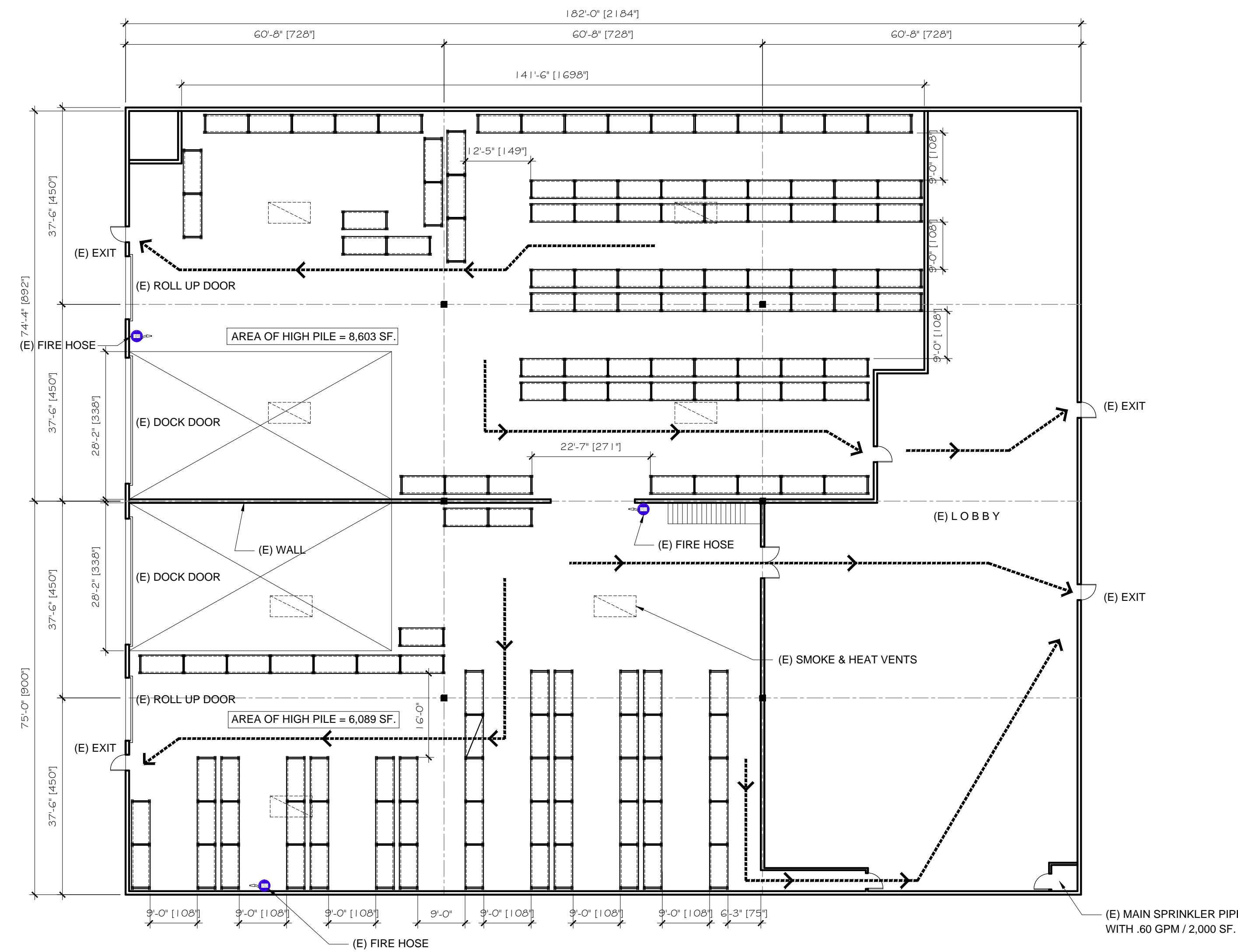


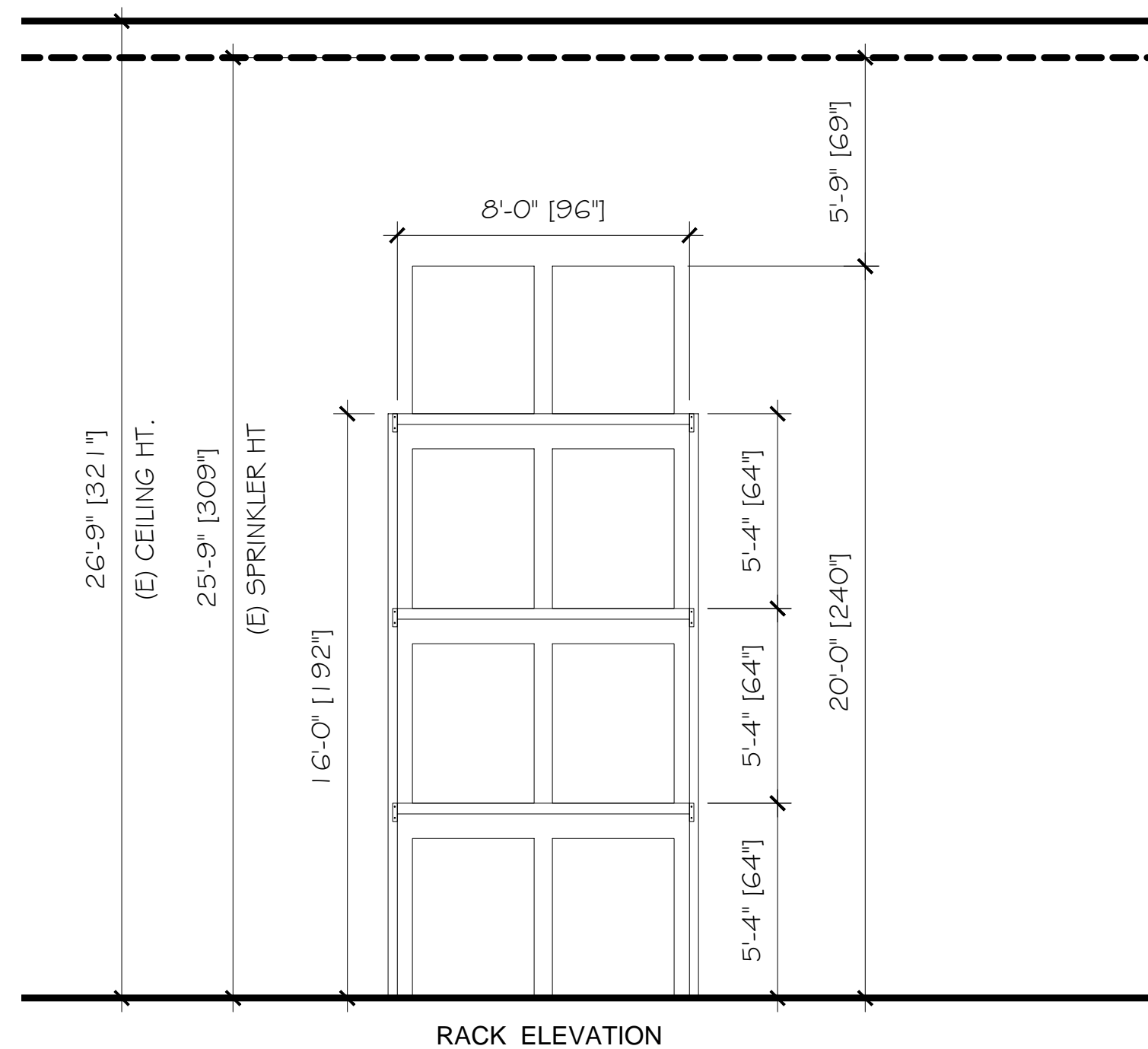
PROJECT TITLE : INSTALLATION OF STORAGE PALLET RACKS
PROJECT LOCATION : HAYWARD, CA.



SITE PLAN



1 LAYOUT PLAN
 Scale: 1/16" = 1' - 0"



RACK ELEVATION

APPLICABLE CODES & REGULATIONS		SCOPE OF WORK:	
AREAS: AREA OF WAREHOUSE: 19,869 SF. TABLE 2306.2 GENERAL FIRE PROTECTION AND LIFE SAFETY REQUIREMENTS COMMODITY CLASS: SIZE OF HIGH PILE STORAGE AREA: 14,692 SF. NON PUBLIC ACCESS FIRE EXTINGUISHERS EVERY 75' FIRE DETECTION SYSTEM: YES BUILDING ACCESS: @ EVERY 100' SMOKE & HEAT REMOVAL: YES DRAFT CURTAIN: NOT REQUIRED ACCORDING TO TABLE 2306.2 MAXIMUM PILE DIMENSION: 100 LN. FT.		HIGH PILE RACKS 1. FLOOR PLAN OF THE BUILDING SHOWING LOCATIONS AND DIMENSIONS OF HIGH PILE STORAGE AREAS. 2. USABLE STORAGE HEIGHT FOR EACH STORAGE AREA. 3. NUMBER OF TIERS WITHIN EACH RACK, IF APPLICABLE. 4. COMMODITY CLEARANCE BETWEEN TOP OF STORAGE AND THE SPRINKLER DEFLECTOR FOR EACH STORAGE ARRANGEMENT. 5. AISLE DIMENSIONS BETWEEN STORAGE ARRAY. 6. MAXIMUM PILE VOLUME FOR EACH STORAGE ARRAY. 7. LOCATION AND CLASSIFICATION OF COMMODITIES IN ACCORDANCE WITH SECTION 2303. 8. LOCATION OF COMMODITIES WHICH ARE BANDED OR ENCAPSULATED. 9. LOCATION OF REQUIRED FIRE DEPARTMENT ACCESS DOOR. 10. TYPE OF FIRE SUPPRESSION AND FIRE DETECTION SYSTEMS. 11. LOCATION OF VALVES CONTROLLING THE WATER SUPPLY OF CEILING AND IN-RACK SPRINKLERS. 12. TYPE, LOCATION AND SPECIFICATIONS OF SMOKE REMOVAL AND CURTAIN BOARD SYSTEMS.	
CALIFORNIA FIRE CODE 2010 EDITIONS (2009 IFC) CALIFORNIA BLDG CODE 2010		INSTALL HIGH PILE STORAGE PALLET RACKS IN 1,195 LN FT @ 16' HIGH.	
PROJECT DATA: OCCUPANCY CODE: S/B SPRINKLER DENSITY: 0.60 GPM / 2000 SF. SMOKE VENTS: YES, RATIO 1:65 COMMODITY STORING: FIRE EXTINGUISHER: YES @ EVERY 75' HEIGHT TO ROOF HIGHEST POINT: 26'-9" HEIGHT TO SPRINKLER HEAD: 25'-9" DIST. OF TOP OF PRODUCT TO HEAD: 5'-9" ENCAPSULATED LOADS: NO IN RACK WIRE DECKING: YES HAZARDOUS MATERIALS: NO WOOD PALLETS: YES		SEE LAYOUT PLAN FOR DIMENSION, ALL RACKS ARE ALL HIGH PILED. SEE ELEVATION FOR USABLE STORAGE HEIGHT 20'-0" SEE ELEVATION FOR NUMBER OF TIERS. SEE ELEVATION FOR COMMODITY CLEARANCE FROM SPRINKLER DEFLECTOR; 5'-9" CLEAR. SEE LAYOUT PLAN FOR AISLE CLEARANCES. 10,600 CU. FT. MAX. FOR EACH STORAGE. ALL NON ENCAPSULATED LOAD ON THE RACKS. SEE LAYOUT PLAN FOR (E) EXIT DOORS EXISTING SPRINKLER DENSITY: .60 GPM/ 2,000 SQ FT. SEE FLOOR PLAN FOR LOCATION OF MAIN SPRINKLER VALVE. SEE LAYOUT PLAN FOR THE LOCATION OF SMOKE & HEAT VENTS. CURTAIN BOARD IS NOT REQUIRED ACCORDING TO TABLE 2306.2	
STRUCTURAL: RACK DESIGN & ENGINEERING CO. GARNIK OHANIAN ADDRESS: 412 WEST BROADWAY, SUITE 204 GLENDALE, CA 91204 PHONE NUMBER: (818) 240.3810 FAX NUMBER: (818) 240.3813		BIG JOE HANDLING SYSTEMS 25932 EDEN LANDING RD. HAYWARD, CA 94545 TEL. NO. 510-785.6900 FAX NO. 510-785.0908 WWW.BIGJOELIFT.COM E-MAIL YOUR COMMENTS RONLO@BIGJOELIFT.COM	
C B A REV.		DRAWN BY RF 5/2/12 APPROVED BY APPROVED BY DATE SCALE AS SHOWN	
THE INFORMATION CONTAINED IN THIS DRAWING IS THE SOLE PROPERTY OF BIG JOE CALIFORNIA NORTH, INC. ANY REPRODUCTION IN PART OR AS A WHOLE W/O THE WRITTEN PERMISSION OF BIG JOE CALIFORNIA INC. IS PROHIBITED		ADDRESS: HAYWARD, CA. DRAWING NO.	